



conejo valley

BONSAI society

Volume 19 Number 8 August 2022

A member of the Golden State Bonsai Federation 

### In This Issue

- **President's Message:**  
Come to CVBS's Annual Swap Meet ... 1
- **CVBS Programs:**  
The 2022 Schedule ... 2
- **Barrett's Bonsai Tips:**  
Summer Time and the Bonsai Aren't Easy ... 3
- **CVBS Refreshments** ... 3
- **CVBS Niche Displays** ... 3
- **CVBS Membership** ... 3
- **Bonsai Online:**  
Bjorn and Ryan: YouTube Bonsai Stars ... 4
- **July Virtual Niche:**  
Blumenberg's Blossoming Rosemary Bonsai ... 5
- **Library/Book of the Month:**  
Sergio Cuan on Deciduous Bonsai Design ... 6
- **Coming Events** ... 7
- **Bonsai Definitions**  
How Big Can a Bonsai Be? ... 7

## Conejo Valley Bonsai Society Meetings

Westlake Village City Hall  
Community Room  
31200 Oakcrest Drive  
Westlake Village, CA 91361  
3<sup>rd</sup> Thursday of the Month  
7:30 PM – 9:00 PM

Visit Our Website  
[www.cvbs-bonsai.org](http://www.cvbs-bonsai.org)

### President's Message

## Come to CVBS's Annual Swap Meet

By Marj Branson

Summer is in full swing—and so is the Conejo Valley Bonsai Society. There are plenty of activities ahead, so please read on for a rundown.

First up, remember that our August meeting includes CVBS's annual swap meet. Bring bonsai items you would like to swap or sell to fellow members—and bring your cash to pick up a good bargain or two. It is always fun.

I will lead the short talk and discussion at our August meeting. We will cover how to prepare bonsai for an exhibition. And remember to mark your calendar for our own annual exhibition at the Gardens of the World, Thousand Oaks on October 7 – 8. Note that this year the show will be on Friday and Saturday.

Another reminder: We have our new club member badges. Thank you, Membership Chair Nancy Smeets, for making this happen. If you are a paid member and do not have your badge, see me or Nancy to get yours.

Club Advisor Ken Fuentes led our July short talk. His topic: air layering.

One of the main points Ken made was that not all air layers take. Everyone has a different environment, and some areas may have better luck than others. When living in Florida, he said, almost every air layer took whereas here in Thousand Oaks, they do not. Florida has natural humidity, which helps.

The point is that with all the effort and work involved in doing an air layer, you have to ask yourself whether it is worth it or is it better to use an alternative method. The procedure Ken explained was:

1. Do a complete cut of the bark around the branch or trunk. Be sure to cut completely through the bark and cambium layer. He made the cut approximately 1 inch wide. He removed everything from this area.
2. Cover the cut area with root hormone powder and coco fiber (which is neutral pH).
3. Put a plastic bottle around it all to

keep the coco fiber moist. If the weather is very hot, he puts foil over the bottle to reflect the heat.



Marj Branson

Some people put black plastic over the area to absorb warmth if the temperature is cool.

4. After two – three weeks, check to see if fine roots have started. Be very careful in checking because the roots can break off easily.

If the branch or tree has rooted, cut the branch or tree off at the cut and plant it.

Ken brought in samples of air layering he had done on macadamia branches. In some instances, instead of putting forth roots, the bark had totally regrown over the cut.

### More To Come

Nisei Week is back, and the second John Y. Naka Memorial Bonsai Exhibition will be held August 20 – 21, 2022. Mike Blumenberg and Nancy Smeets will be showing trees, so we will have good club representation. (See page 7 for show details.)

CVBS Member Bob Pressler's Kimura Bonsai & Landscape Nurseries started an inventory-reduction sale last weekend. There are many trees, pots, and tools for sale. The sale will be open Monday through Saturday from 9:00 AM to 5:00 PM through September 5th. For more information on the nursery see [www.kimurabonsainursery.com](http://www.kimurabonsainursery.com).

Finally, we wish to send a hearty get well to Dick Winston, who recently suffered a fall and is now recuperating. All the best Dick for a speedy recovery!

I hope to see you all on Thursday, August 18th. 🌳

## Contact Us

(Click on Email Address)

### Officers

#### President

Marj Branson

Phone (805) 373-1330

president@cvbs-bonsai.org

#### Vice President

Mike Blumenberg

Phone (916) 390-1310

vice.president@cvbs-bonsai.org

#### Treasurer

Ken Fuentes

Phone (805) 495-7480

treasurer@cvbs-bonsai.org

#### Secretary

Ken Martin

Phone (805) 445-9221

secretary@cvbs-bonsai.org

### Committees

#### Advisor

Ken Fuentes

Phone (805) 495-7480

advisor@cvbs-bonsai.org

#### Membership Chair

Nancy Smeets

Phone (213) 810-4280

membership.chair@cvbs-bonsai.org

#### Newsletter Editor

David E. Whiteside

Phone (805) 509-1830

editor@cvbs-bonsai.org

#### Program Chair

Nancy Smeets

Phone (213) 810-4280

program.chair@cvbs-bonsai.org

#### Publicity Co-Chairs

Guy & Deborah Ervin

Phone (805) 495-8688

publicity@cvbs-bonsai.org

#### Refreshments Chair

Damon DuBois

Phone (805) 558-2867

refreshments@cvbs-bonsai.org

#### Librarian

Mike Blumenberg

Phone (916) 390-1310

librarian@cvbs-bonsai.org

#### Field Trips & Activities

Damon DuBois

Phone (805) 558-2867

activities.chair@cvbs-bonsai.org

#### Webmaster

Tom McGuire

website@cvbs-bonsai.org

# CVBS Programs 2022

If you are interested in the CVBS Mentoring Program, please contact Marj Branson for more information & applications to participate.

January 20	<b>CANCELED DUE TO COVID</b> 7:30 PM: Brief Meeting followed by Workshop— <b>BRING YOUR TREES</b>
February 17	<b>CANCELED DUE TO COVID</b> 7:30 PM: Brief Meeting followed by <b>DEMONSTRATION: TBA</b>
March 17	<b>CONFIRMED!</b> 7:30 PM: Brief Meeting followed by Workshop— <b>BRING YOUR TREES</b>
April 21	7:30 PM: Brief Meeting followed by <b>PEER REVIEW/WORKSHOP: BRING YOUR TREES</b>
May 19	7:30 PM: Brief Meeting & Presentation: Fertilizers led by Ken Martin followed by <b>PEER REVIEW/WORKSHOP: BRING YOUR TREES</b>
June 16	7:30 PM: Brief Meeting & Presentation: Pot Selection led by Mike Blumenberg followed by <b>WORKSHOP: BRING YOUR TREES</b>
July 21	7:30 PM: Brief Meeting & Presentation: Air Layering led by Ken Fuentes followed by <b>WORKSHOP: BRING YOUR TREES</b>
August 18	7:30 PM: Brief Meeting & Presentation: Show Preparation led by Marj Branson followed by Workshop and <b>Swap Meet—BRING YOUR TREES AND OTHER ITEMS</b>
September 15	7:30 PM: Brief Meeting & Presentation: Bonsai v. Penjing led by David Whiteside followed by <b>PEER CRITIQUES—BRING YOUR EXHIBITION TREES</b>
October 7 – 8	<b>19TH ANNUAL CVBS EXHIBITION</b> Gardens of the World <b>NOTE: FRIDAY –SATURDAY</b>
October 20	7:30PM: Brief Meeting & Presentation: Selecting a Tree led by Rick Boyer followed by <b>WORKSHOP: BRING YOUR TREES</b>
November 17	7:30 PM: Brief Meeting with <b>Club Elections &amp; Presentation: Wiring</b> led by Ken Fuentes followed by <b>WORKSHOP: BRING YOUR TREES</b>
December 15	7:30 PM <b>HOLIDAY POTLUCK, RAFFLE &amp; AUCTION</b>

# Summer Time and the Bonsai Aren't Easy

By Jim Barrett

Ahh! Good old summer. Between the heat and the not so good water, most maples (at least mine) look pretty tired.

If the maples are healthy, consider leaf pruning them towards the end of this month. Remove every leaf—large, small, healthy, or shriveled. Leaving some or pruning in stages only makes the tree try to survive on what is left. I don't recommend leaf pruning red or lace leaf varieties.

If you candle pruned your black pines in June or July, you should have many new shoots appearing at the base of the cut-off candles. Selectively remove those shoots that are growing vertically off horizontal branches, leaving one or two side shoots and one for the new terminal of each branch. What you want to promote is a fine network of twigs.

On vertical branches in the upper areas and the top of the tree, remove the center candles, leaving one, two, or three side shoots. On more mature trees and more intricate networks of twigs and branches, leave fewer new shoots.

In October or November, you will want to remove some of the new growth you left this summer.

## Rotate Your Trees

Think about rotating your trees—especially if they are displayed against a wall or fence. Turning them periodically will even out the growth and may prevent dieback.

Some trees are entering a semi-dormant period now and,



Jim Barrett

for this reason, seem to need less water. Don't think that something is wrong unless the tree shows signs of distress. Heat buildup in soil above 80 or 90 degrees tends to slow growth. This is natural. Do not water if the soil is still wet. It takes practice and knowledge of your plants' needs to keep them healthy and happy. Fortunately, most plants survive most mistakes.

If you fertilize this month, do so sparingly. I recommend a very diluted liquid fertilizer low in nitrogen if you must fertilize.

Spraying fungicide to control powdery mildew or needle cast may also kill beneficial fungi present in soils.

It's not a bad idea

to cover soil surfaces with plastic or a portable shield to keep drips and spray off of the soil.

Wire that was put on earlier last winter or spring should be checked—especially on deciduous trees. Remove all wire and reapply it only on those branches that do not hold their position and shape.

No repotting except emergency repotting until this fall. 🌱

## 2022 Refreshments

August	Antonio Viscarra
Sept.	Damon DuBois
Oct.	Rick Boyer
Nov.	Volunteer Needed

## CVBS Niche Displays

# Niche Display Program

In the Niche Display Program, club members set up a mini exhibition display. Such a display consists of: the tree in a nice bonsai pot; a display stand; and an accent plant.

All these items are important to create the balance for a good display. We aspire to present the best display possible for everyone's pleasure and edification.

However, it is also our desire to give everyone an opportunity to learn by doing. So if any less experienced member feels their trees are not ready for a finished display, it is worthwhile creating a display that is a work-in-progress. It will be up to the club member to determine which category their display falls into, and then the work-in-progress display can become the talking point of work done, work intended, and suggestions from the floor.

We encourage all members to sign up for the niche display! Please have a look at your 2023 calendar (see the list of current display volunteers at right—2022 is filled) and let us know when you would like to present your display.

—Marj Branson

## 2022 Niche Displays

(Month of meeting)

August	Damon & Wendy DuBois
Sept.	David Whiteside
Oct.	Ken Martin
Nov.	Ken Fuentes
Dec.	None: Holiday Party

## CVBS Membership

# Interested in CVBS?

The Conejo Valley Bonsai Society is open to anyone interested in the horticultural art of bonsai. If you are not a member, consider joining now. With Covid-19 restrictions lifted for now, we have resumed meeting at 7:30 PM on the third Thursday of every month in the Westlake Village City Hall Community Room (31200 Oakcrest Drive, Westlake Village, CA 91361). Membership includes presentations by bonsai experts, workshops, critiques, member swap meets, field trips, a custom-made name badge, and this award-winning newsletter.

It's inexpensive and easy to join. Annual dues are \$25 for one, or \$30 for couples. Simply write a check (made payable to the Conejo Valley Bonsai Society) and mail it to: CVBS Membership, c/o Marj Branson, 1169 Triunfo Canyon Road, Westlake Village, CA 91361, or bring it to our next meeting.

—Nancy Smeets

# Bjorn and Ryan: YouTube Bonsai Stars

By Ken Martin

Online Video Review: All on YouTube

**Bjorn Bjorholm**  
Eisei-en Bonsai near Nashville, Tennessee  
Bonsaikunst Hamburg Demo  
YouTube: [Bonsai at Extreme Locations](#)  
28 min

During the pandemic when Bjorn Bjorholm had been scheduled to go to Germany, he provided them with this demonstration in lieu of a visit. His every action is accompanied with detailed, logical explanations. The extreme location is demonstrated by this Rocky Mountain juniper collected from the wild six years ago and turned into a wind-battered tree in an “extreme location.” Oh, to have Bjorn’s talent.



Bjorn with the Rocky Mountain juniper before he styled it (above).

The Rocky Mountain juniper after Bjorn had styled it (left). Note the change in potting angle.



**Ryan Neil**  
Bonsai Mirai  
St. Helens, Oregon  
YouTube: [Repotting strategy](#).  
May 2020  
34 min

Screen captures by Ken Martin

Ryan Neil, owner of Bonsai Mirai near Portland, Oregon, gives a lecture on the steps he uses when repotting a tree. A several-step process he has developed over the years and follows. He uses the tree next to him as an illustration of applying his repotting process. He does not repot in this video. Some take-aways: He never bare-roots a conifer. He can, however aggressively prune the roots in some area so as to fit the tree in a chosen pot. He is dead against repotting in a slightly larger than the desired “final” pot. It is a total waste of time in his mind. 🌲



Ryan Neil, owner of Bonsai Mirai, during his lecture (right).

# Blumenberg's Blossoming Rosemary Bonsai

Editor's Note: Dick Winston was scheduled to do the niche display at the Conejo Valley Bonsai Society's July 2022 meeting; Dick was unable to attend due to an accident (see President's Message, page 1). Instead, we here present a virtual niche from our 2021 annual exhibition: A blossoming rosemary from Mike Blumenberg. Here are some details about Mike's tree.

Observant members will recognize this flowering rosemary (*Salvia Rosemarinus*) bonsai. It first appeared in the November 2021 issue of this newsletter as part of our club's virtual 18th Annual Exhibition. (See page 10 of that issue. If you have not saved your copy, you can find it on our website at [www.cvbs.bonsai.org](http://www.cvbs.bonsai.org) under the Newsletter tab.) But a good bonsai is always worth another look, so I selected this tree for the April bonsai in the 2022 CVBS calendar. Now, here it is for a magical third viewing.

—David Whiteside

Mike Blumenberg's  
blossoming  
rosemary (right)  
in a round pot.



Photo by Mike Blumenberg

# CVBS Bonsai Library Open for ‘Business’

Now that the Conejo Valley Bonsai Society is meeting in-person, please return any overdue items borrowed from the CVBS Book Mobile while our club meetings were suspended amid the Covid-19 outbreak. But remember that if you want a good bonsai book or DVD to review, you can see me during a meeting or give me a call and request a book, pamphlet, periodical, or DVD. For a complete list of our library holdings, please see “Library” under the “Resources” tab on the revamped CVBS website [www.cvbs-bonsai.org](http://www.cvbs-bonsai.org).

—Mike Blumenberg

## Book of the Month

*Sergio Cuan on Deciduous Bonsai Design*. DVD by the Bonsai Club of Santa Barbara, California (2021).

This month’s “Book” review focuses on another DVD in the Conejo Valley Bonsai Society Library: Sergio Cuan’s discussion of deciduous tree design. This presentation is from April 15, 2021, when Covid restrictions were preventing group gatherings. In lieu of meetings, the Conejo Valley and Santa Barbara Bonsai clubs teamed up to sponsor four remote demonstrations, including this one with Cuan. I wasn’t able to watch the presentation live last year, so I appreciate the ability to watch it now. It is almost two hours long, so it made a recent five-hour flight back from the East Coast go fast! Cuan is an amazing bonsai artist with an easy-going style that made the video easy and fun to watch. I felt like I was part of the live discussion and kept wanting to ask questions, but that didn’t work so well! In the recording, Cuan expressed his preference for deciduous bonsai, especially in their winter phase when you can appreciate the branch structure. He reviewed multiple trees and showed a series of pictures starting with how a tree looked when he acquired it, how he shaped the tree over time, and how it looks today or when he sold it. Each of the transformations was amazing. The two sets of screen captures below are good examples. The first is a Kashima (Dwarf) Japanese Maple and the second is Bald Cypress trained in a weeping style. You can check out this DVD for yourself at an upcoming CVBS meeting.

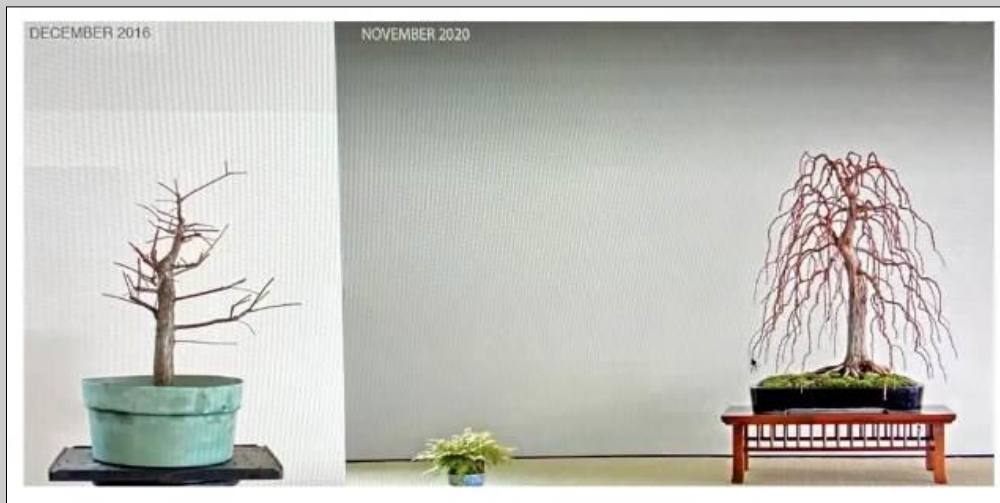
—Mike Blumenberg

Screen captures by Mike Blumenberg

**Kashima (dwarf Japanese) Maple before (at left in screen shot, right) and after (far right). Notice the five-year time lapse (2012 – 2017).**



**Bald Cypress before being trained in a weeping style (left in screen shot, right) and after (far right). Notice the four-year time lapse (December 2016 – November 2020).**



## Coming Events (Click on the Addresses to visit Websites or send Emails)

**IN-PERSON BONSAI EVENTS IN CALIFORNIA HAVE RETURNED FOR THE REMAINDER OF 2022 (see below). MOST GARDENS ALSO ARE OPEN—BUT CONFIRM STATUS AND Covid PROTOCOLS OF THE GARDEN AHEAD OF TIME. WE ALSO WILL CONTINUE TO LIST VIRTUAL BONSAI EVENTS IF ANY ARE ANNOUNCED (NONE ARE LISTED AT THIS TIME).**

**2022**

### August

#### August 20 – 21, 2022 Los Angeles, California

The second John Y. Naka Memorial Bonsai Exhibition (formerly known as Nampu Kai) during Nisei Week, George J. Doizaki Gallery, Japanese American Cultural & Community Center, 244 South San Pedro St., Los Angeles, CA 90012, 10 AM to 5 PM.

### October

#### October 1 & 2, 2022 Oakland, California

East Bay Bonsai Society: Annual Show at the Lakeside Park Garden Center at Lake Merritt, located at 666 Bellevue Avenue, Oakland CA. Show hours are Saturday 10:00 AM – 5:00 PM and Sunday 10:00 AM – 4:00 PM. The show features an impressive exhibit of quality bonsai as well as a demonstration by Andrew Robson, a deciduous artist in the American bonsai community and the President of the Bonsai Society of Portland, Oregon, the largest bonsai club in the United States. There will also be a benefit drawing and a sale of bonsai and related materials. For information, visit [www.eastbaybonsai.org](http://www.eastbaybonsai.org).

#### October 7 & 8, 2022 Thousand Oaks, California

Conejo Valley Bonsai Society 19th Annual Exhibition, The Gardens of the World, 2001 Thousand Oaks Boulevard, Thousand Oaks, CA 91362. 9:00 AM to 5:00 PM Friday & Saturday. Demonstrations both days. No sales. Admission free. For more information, please email President Marj Branson [president@cvbs-bonsai.org](mailto:president@cvbs-bonsai.org), visit our website [www.cvbs-bonsai.org](http://www.cvbs-bonsai.org) or see The Gardens of the World calendar at [www.gardensoftheworld.info](http://www.gardensoftheworld.info).



#### October 8 & 9, 2022 Santa Nella, California

Golden State Bonsai Federation Bonsai Rendezvous 2022: Annual GSBF event held at Hotel Mission de Oro, 13070 S. Highway 33, Santa Nella, CA 95322. Free and open to the public. 30+ vendors from northern and southern California as well as several out of state vendors will be on hand both days. Admission is free, donations are appreciated. Free demonstrations throughout the days. Bring-your-own bonsai work area. Mel Ikeda and his tomodachi group will demonstrate the art of creating bonsai amongst friends. Silent auctions of bonsai trees and related material will be held both days. Consignment silent auction sales opportunities are available. Rendezvous hotel room rate \$155, two-night minimum. For more information contact Rich Guillen at [richguillen@att.net](mailto:richguillen@att.net) or (831) 348-5015.

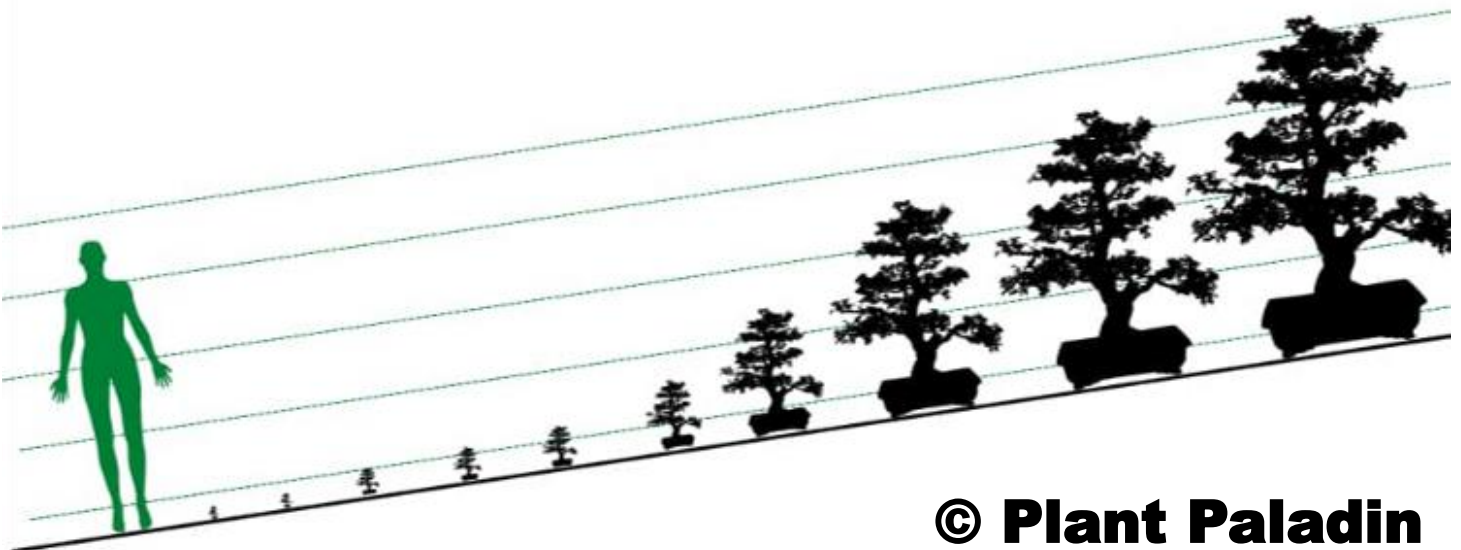


#### October 15 & 16, 2022 Sacramento, California

The Capital City Bonsai Association Show will be held at The Shepard Garden and Arts Center (in McKinley Park), 3330 McKinley Blvd. Sacramento, CA 95816. Show hours are 10 AM – 4 PM both days. The show is a benefit to raise funds for the Bonsai Garden at Lake Merritt and will feature trees from: • American Bonsai Association, Sacramento • Bonsai Sekiyu Kai • Sacramento Bonsai Club • Satsuki Aikokai Association. The sale will include established and starter bonsai, pots, tools, etc. Admission is free. Contact Paul Holtzen for more information at [pbholtzen@sbcglobal.net](mailto:pbholtzen@sbcglobal.net).

### Bonsai Definitions

## How big can a bonsai be?



© Plant Paladin